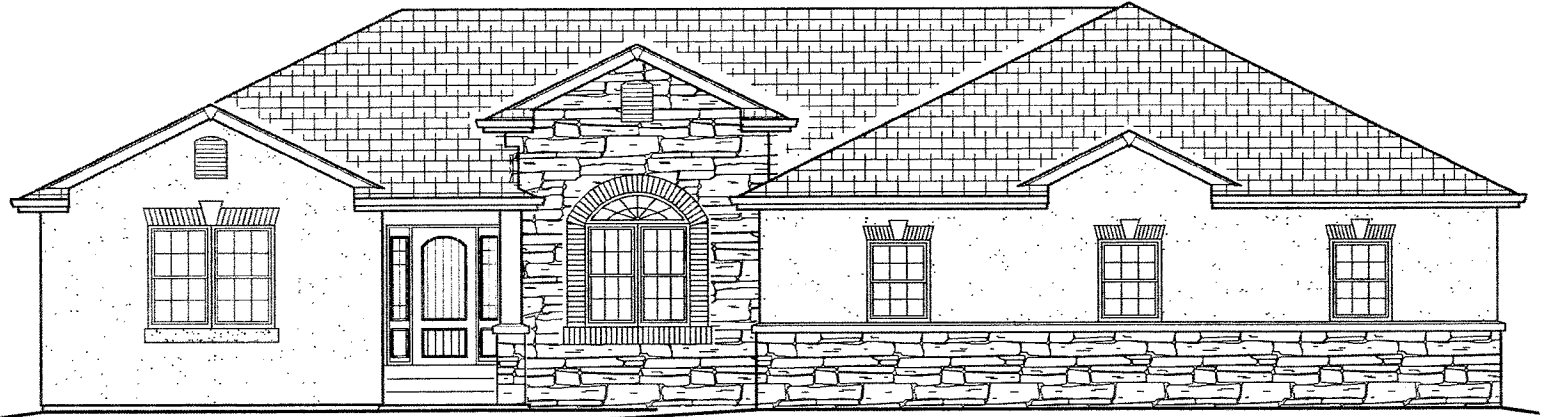


# The Tiffany

BY MAJESTIC CUSTOM HOMES



**FRONT**

**Standard 4-Car Side Entry Garage**  
(Additional Garage Bays Optional)



**BACK**

\*Patio Cover Optional

**Main Level = 1,915 sq. ft.**

**Basement = 1,866 sq. ft.**

**Total = 3,781**

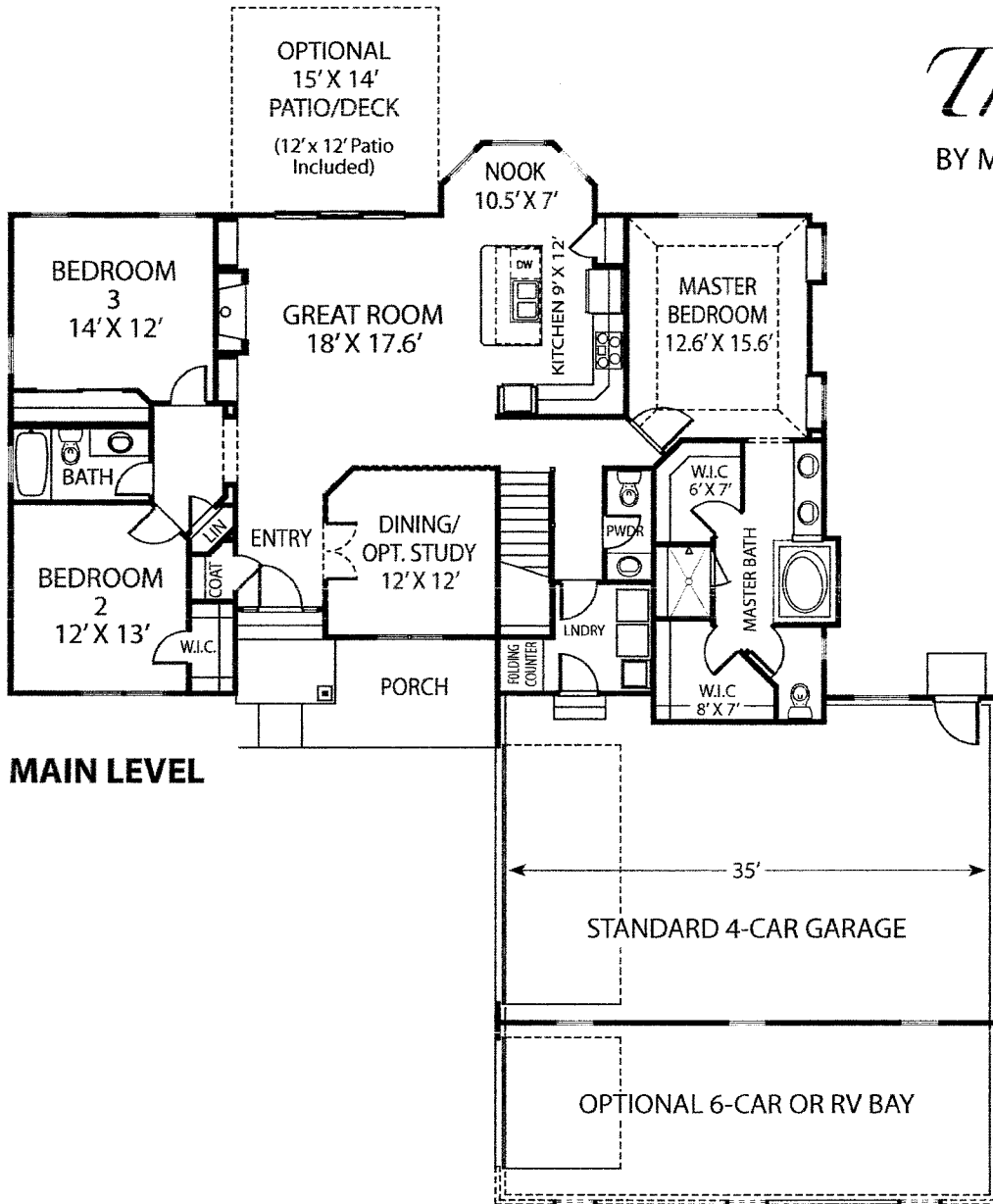
Contemporary ranch plan with side-entry garage, large master suite with his & hers walk-in closets, powder room, laundry room with sink and clothes folding counter, vaulted ceilings and open kitchen with dining nook. Basement finish adds 2 bedrooms, 1 bathroom, family room and other options as requested.

**For more information call 719.492.0685**

**Majestic**  
custom homes, inc

# The Tiffany

BY MAJESTIC CUSTOM HOMES

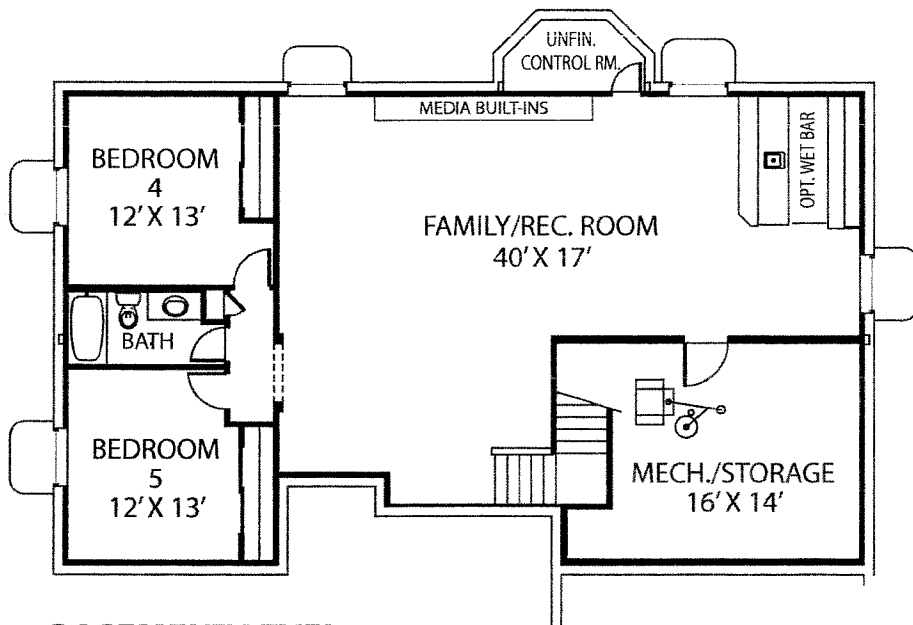


**MAIN LEVEL**

**Main Level = 1,915 sq. ft.**  
**Basement = 1,866 sq. ft.**  
**Total = 3,781**

Contemporary ranch plan with side-entry garage, large master suite with his & hers walk-in closets, powder room, laundry room with sink and clothes folding counter, vaulted ceilings and open kitchen with dining nook. Basement finish adds 2 bedrooms, 1 bathroom, family room and other options as requested.

**For more information call**  
**719.492.0685**



**BASEMENT LEVEL**

\*Basement finish not included in base pricing.

**Majestic**  
**custom homes, inc**

© Majestic Custom Homes, Inc. All rights reserved.  
 This is a preliminary plan version and may vary when built. Plan changes and options may result in additional charges at builder's discretion. All references to square footage are approximate. Plans, pricing and features subject to change without notice or obligation.